

**MIRA NEO**  
**Desktop application software**  
**for A1040 MIRA 3D ultrasonic tomograph**

Installation instructions

## Table of contents

1. Introduction .....	3
2. System requirements .....	3
3. Installation instructions .....	4
4. License deactivation .....	12
5. Content of the software package MIRA NEO .....	14

## 1. Introduction

The goal of this description is to show a setup process of a MIRA NEO desktop application. The full user manual may be found on the ACS-Solutions GmbH website <https://acs-international.com/instruments/a1040-mira-3d/> or under the link: <http://subscribe.acs-international.online/product/download/1>.

The software is protected by the electronic license key that is provided by the vendor after purchasing. For getting the formal quote, invoice, and license key, please, contact the Acoustic Control Systems – ACS Group via e-mail: [sales@acs-international.com](mailto:sales@acs-international.com). Alternatively, you can contact one of our official sales representatives in your region that are listed on the website [www.acs-international.com](http://www.acs-international.com) (chapter “Where to buy”).

## 2. System requirements

The minimum system requirements for the MIRA NEO desktop application are as follow:

<b>CPU</b>	Dual Core 2 GHz and higher
<b>RAM</b>	8 GB and more
<b>Operation System</b>	Windows10 64bit
<b>Graphical processing unit GPU</b>	NVIDIA GPU, minimum 2 GB RAM, OpenGL version 4.6 or higher, Maxwell or next generation architecture

### 3. Installation instructions

Download the software installation package MIRA NEO from the website <https://acs-international.com/instruments/software-and-applications/software/mira-neo-application-software/> (chapter “Download”).

After the download completion find the installation package in your local download folder and continue with the installation.

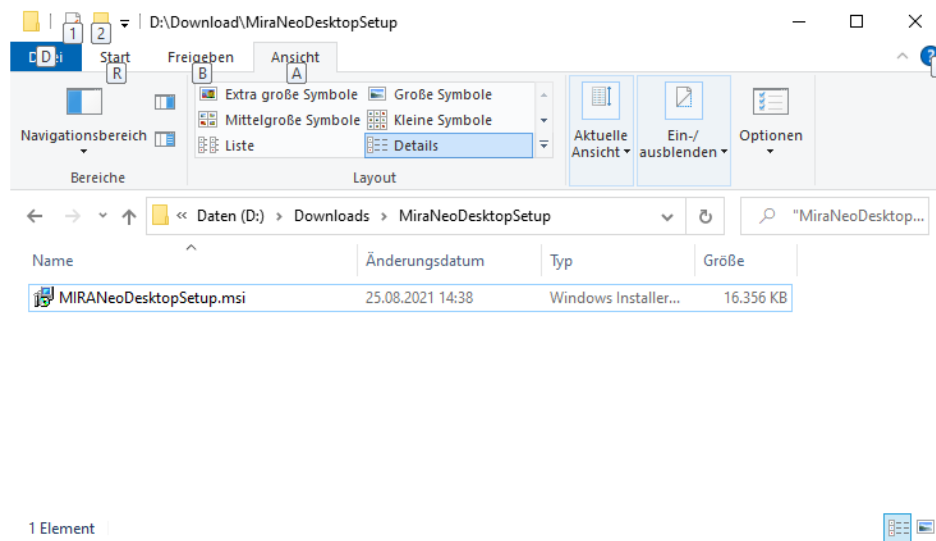


Figure 1 Setup file

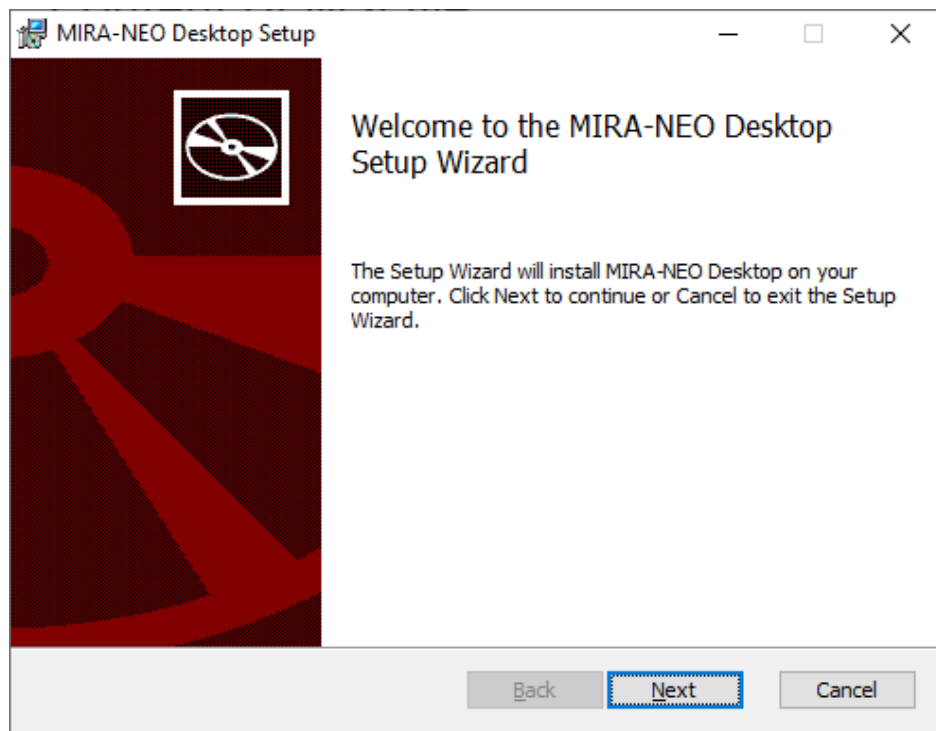


Figure 2 Welcome screen of the setup

On the beginning of setup, the license will be checked.

If the license has not been found, the user will be requested to activate his copy.

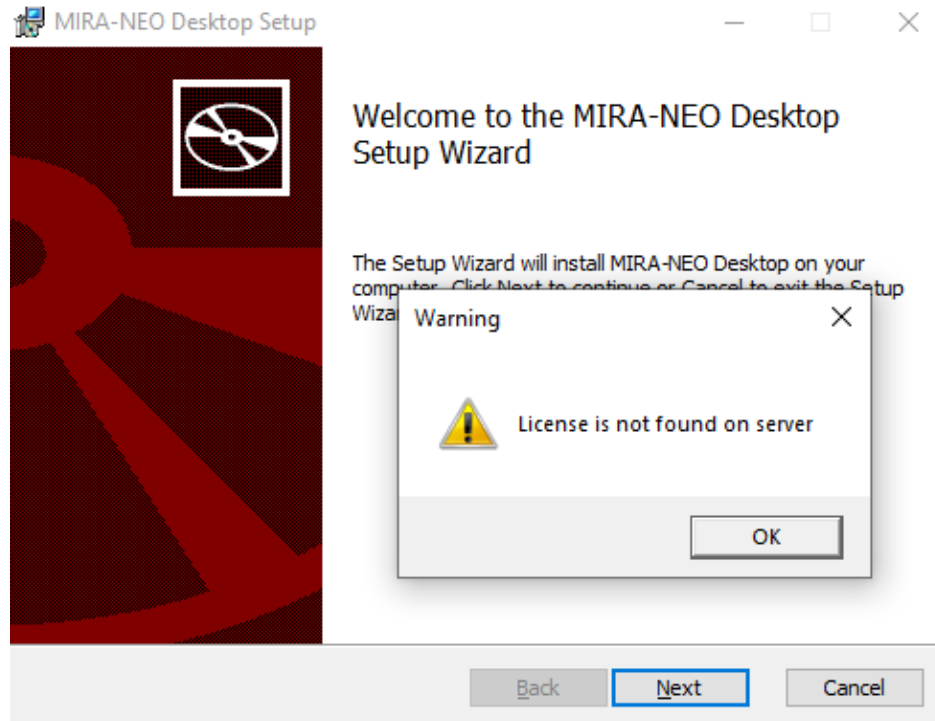
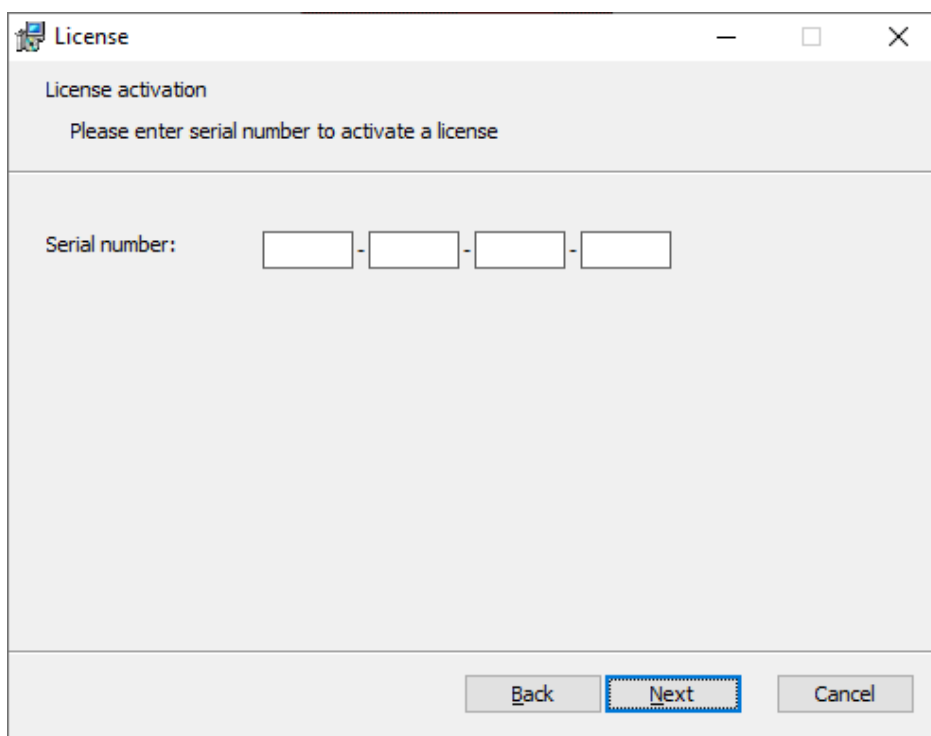


Figure 3 License check

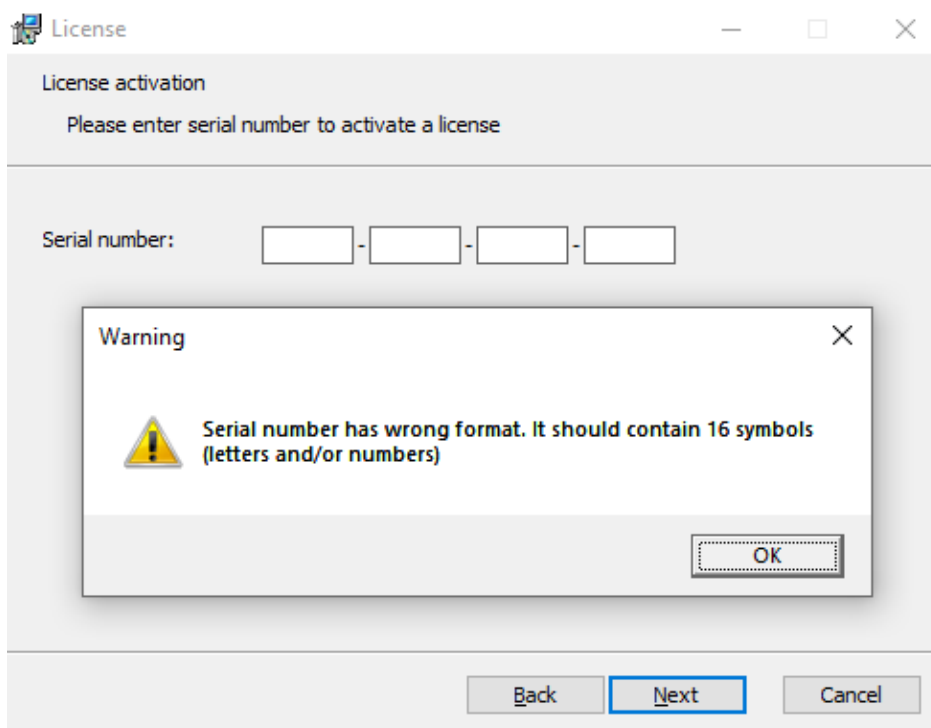
Here the user is requested to enter the license key (16 symbols) provided by the vendor.

Please find possible error messages when entering the incorrect license key in following figures.



The image shows a 'License' dialog box with a title bar containing a small icon, the text 'License', and standard window controls (minimize, maximize, close). The main area is titled 'License activation' and contains the instruction 'Please enter serial number to activate a license'. Below this, there is a label 'Serial number:' followed by four empty text boxes separated by hyphens. At the bottom right, there are three buttons: 'Back', 'Next' (which is highlighted with a blue border), and 'Cancel'.

Figure 4 Request to enter the serial key



The image shows the same 'License' dialog box as in Figure 4, but with an additional 'Warning' dialog box overlaid on top. The 'Warning' dialog box has a title bar with the text 'Warning' and a close button. It contains a yellow warning triangle icon and the text 'Serial number has wrong format. It should contain 16 symbols (letters and/or numbers)'. At the bottom right of the warning box is an 'OK' button. The 'License' dialog box behind it is partially obscured but its 'Next' button remains highlighted.

Figure 5 Ill-formatted serial

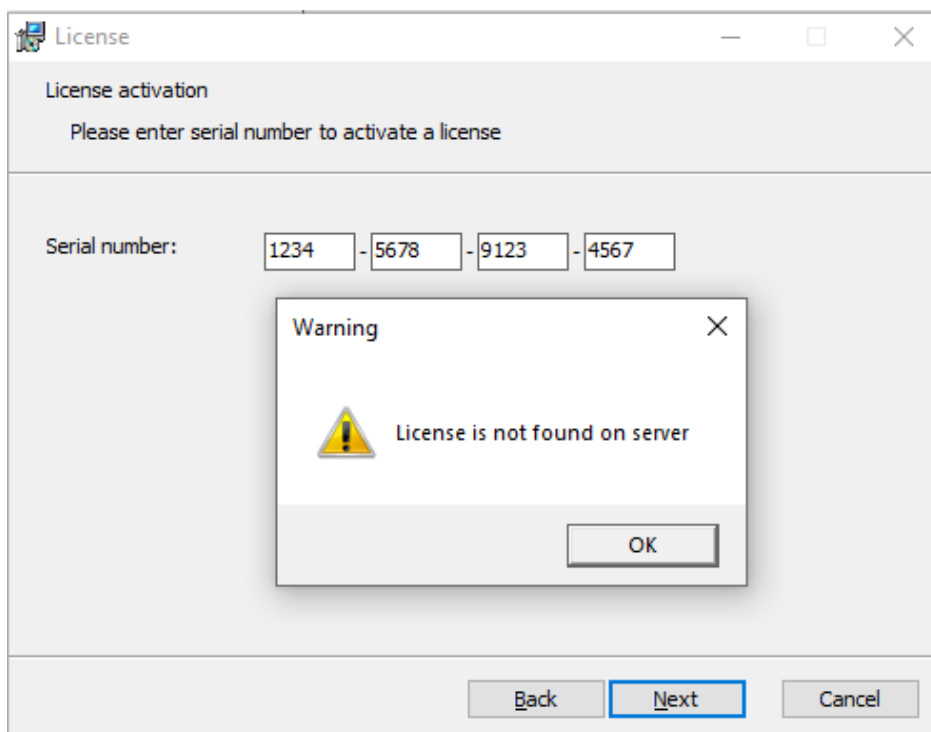


Figure 6 Wrong/non-existing serial number

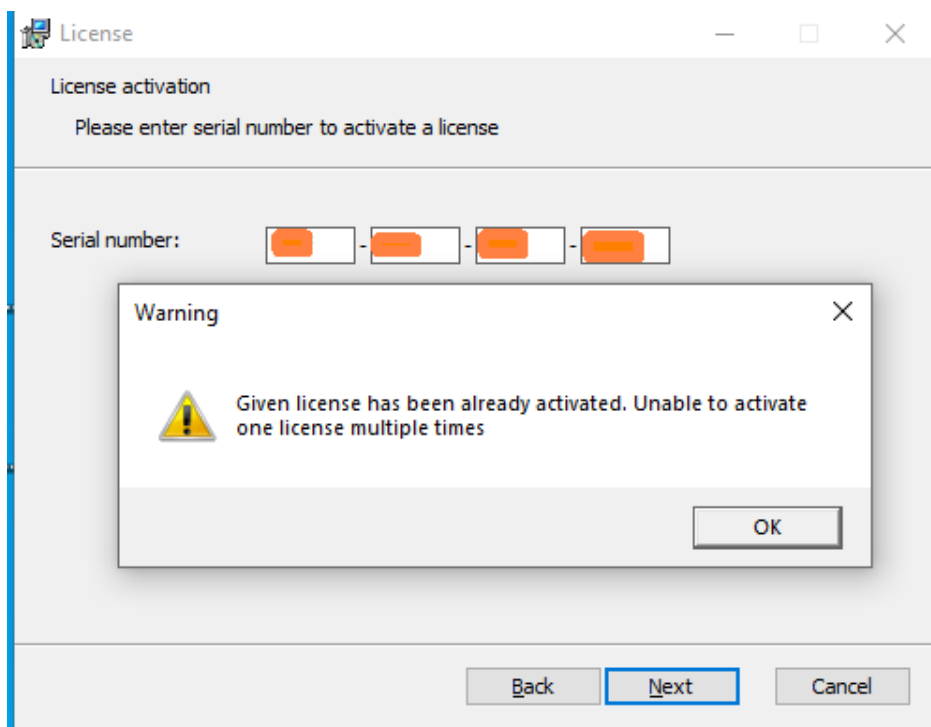


Figure 7 License has been activated already

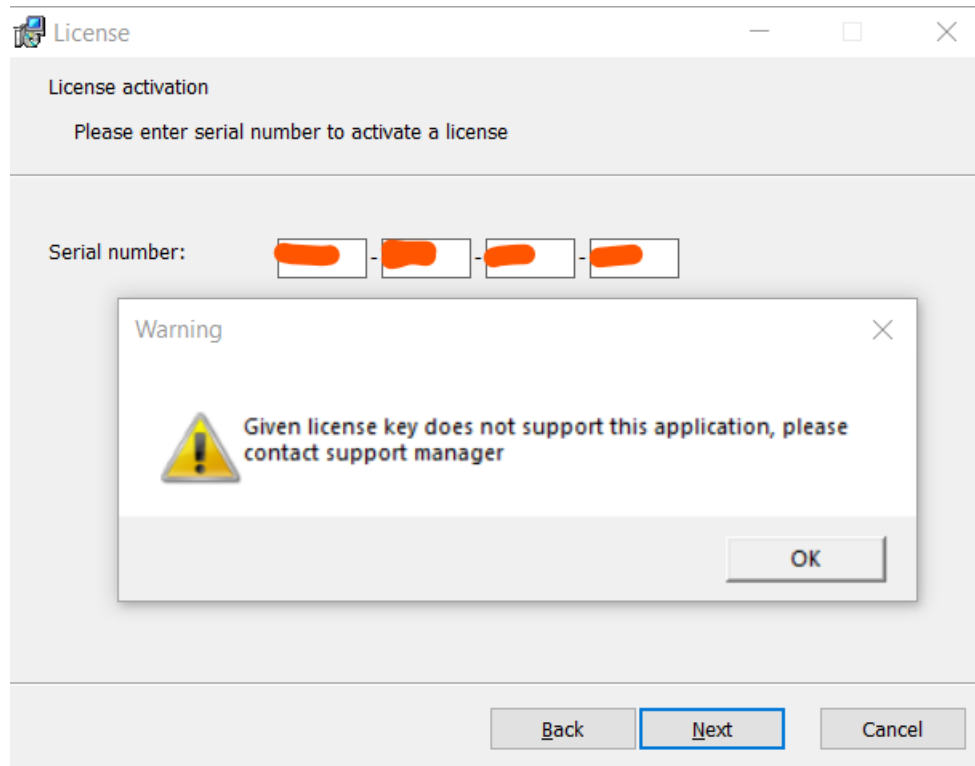


Figure 8 License does not support A1040 MIRA 3D desktop application

After entering correct serial number, the activation of the license occurs on the license server of ACS. For successful activation, the user PC must have the internet connection.

Then the user is requested to specify a folder where measurement data will be stored. By default, it is "C:\MIRANEO". By pressing "Browse" one can select the folder in a dialog window.



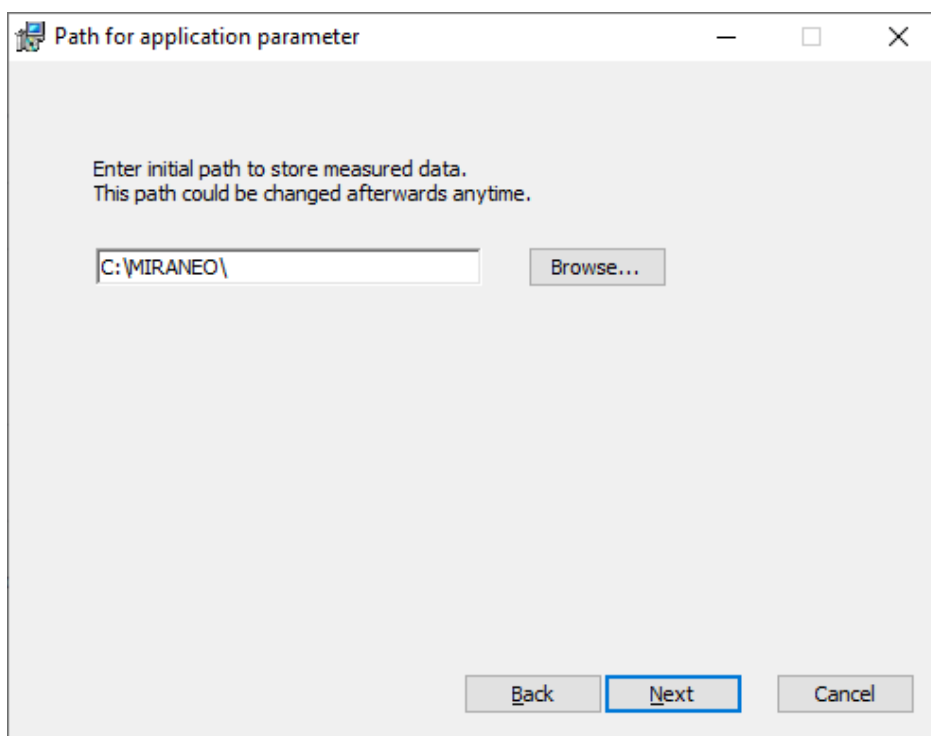


Figure 9 Path to data folder

After pressing “Next” the installer will check if the path can be used. If it is not valid or the user has not enough permissions to write to this path a warning dialog will be shown. In the window you can find the cause of the problem. Until the proper path is not specified further installation is not possible.

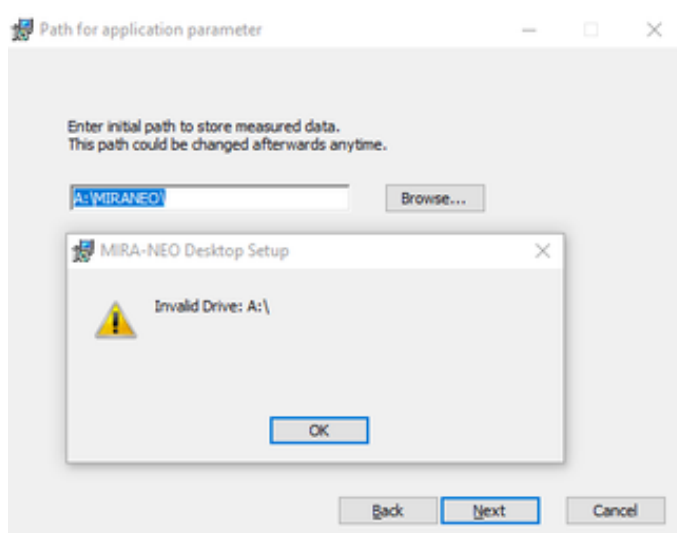


Figure 10 Path to data folder: drive does not exist or inaccessible

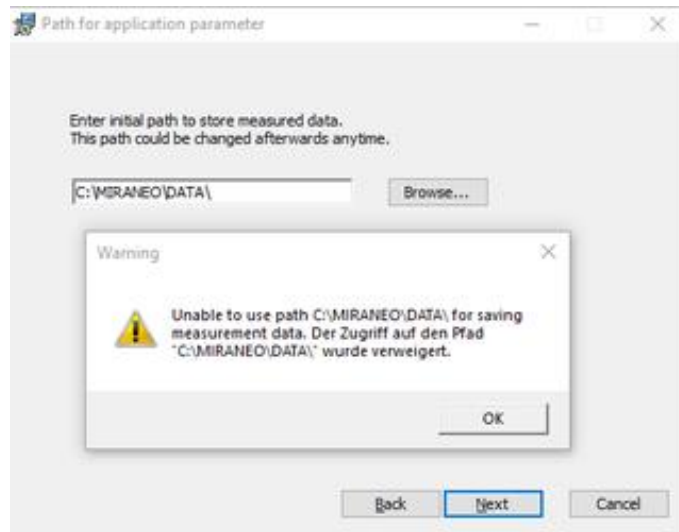


Figure 11 Path to data folder: unable to use the path, not enough rights to access

If the application has been already installed current path will be shown in the text box. On software updates it's not necessary to select the path once again.

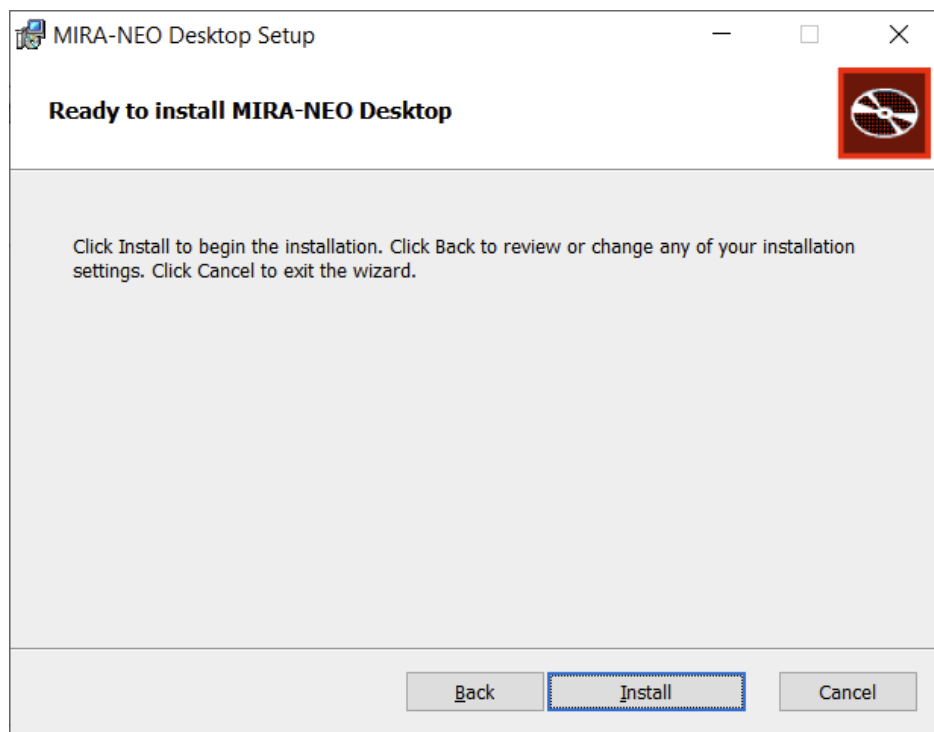


Figure 12 „Ready to install“ screen

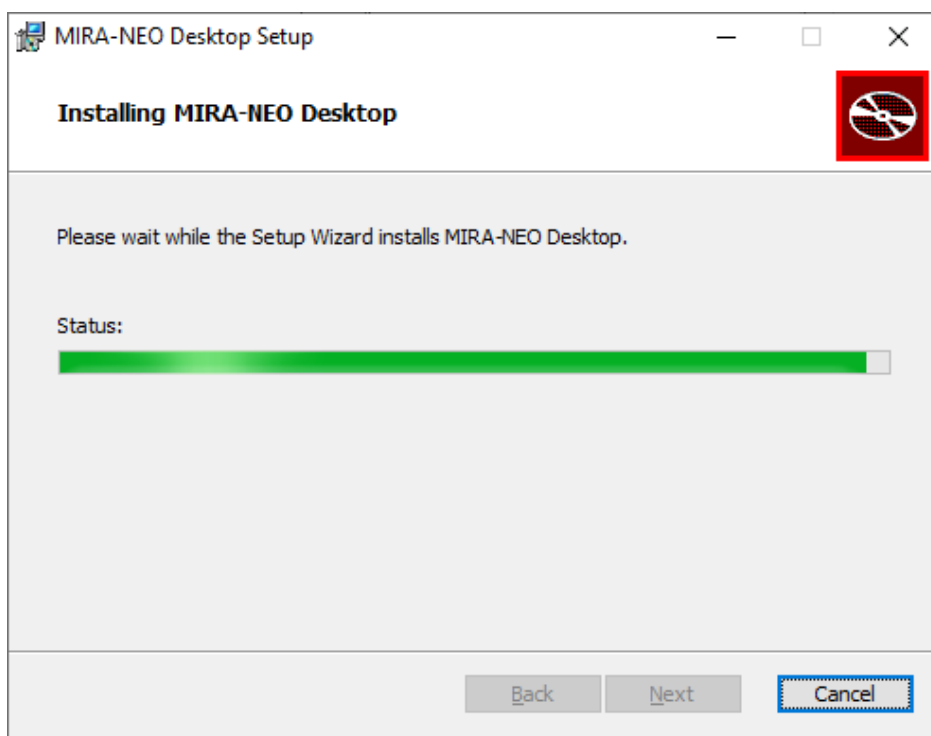


Figure 13 Installation in progress

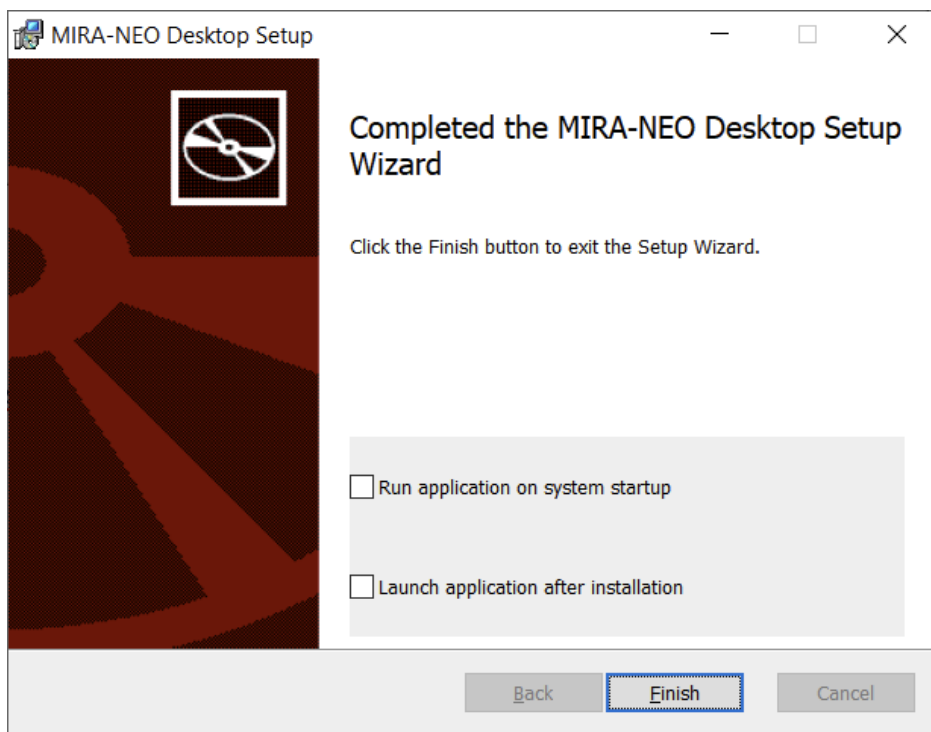


Figure 14 Installation finished

On installation finish you can optionally select to start the application on Windows startup and to launch the application directly after installation.

#### 4. License deactivation

To use your activated license on another PC, you must first deactivate it on your current PC. To do this, run the “License Deactivation” software from the Start menu.

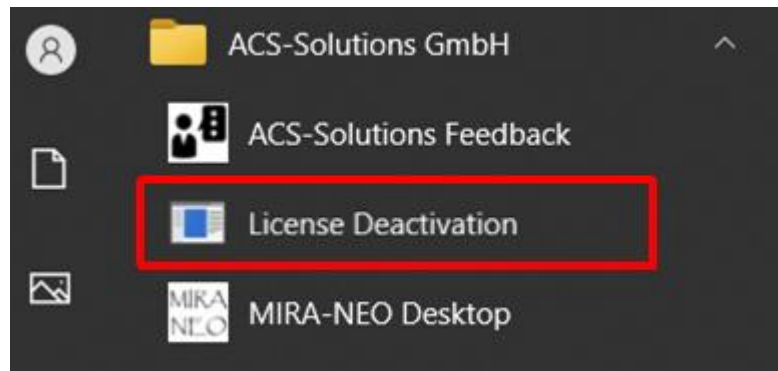


Figure 15 License deactivation software shortcut in Windows Start menu

On start, you'll be prompted to confirm the deactivation.

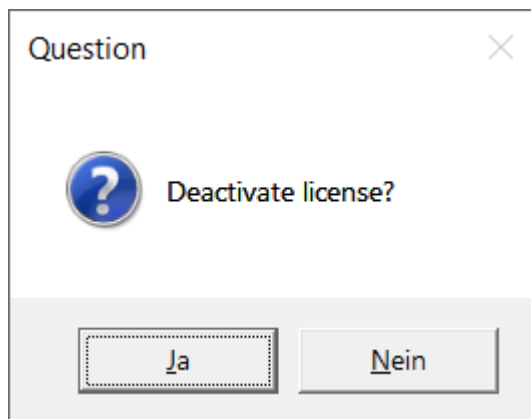


Figure 16 Confirmation of license deactivation

If you occasionally launch the software, you could cancel the deactivation by pressing “No”.

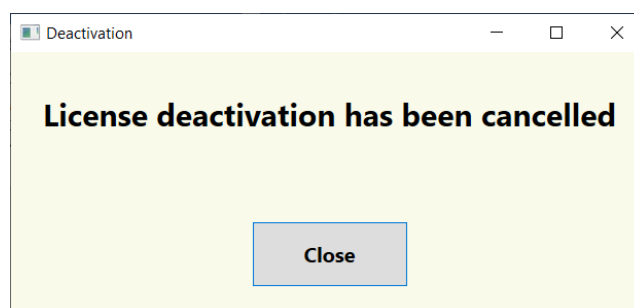


Figure 17 Cancelling of the deactivation

By pressing “Yes” your license will be deactivated.



Figure 18 License deactivation result

If there are issues with the internet connection to a licensing server, you’ll see an information message. In this case, your license is still active and assigned to the current PC.

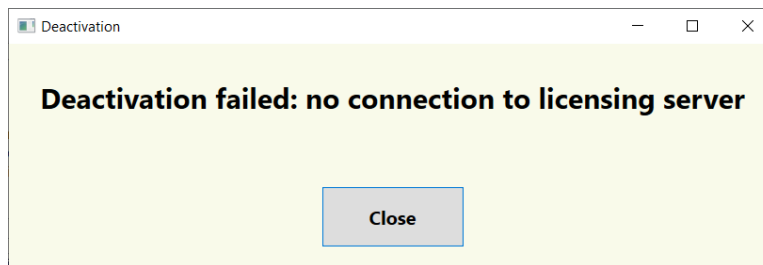


Figure 19 License deactivation could not be completed: connection issue

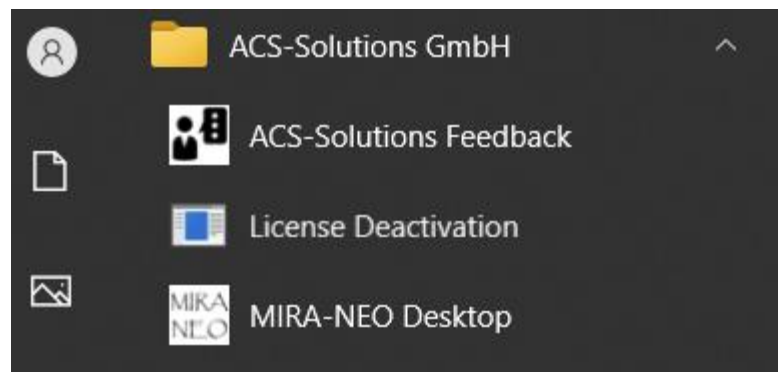
Press “Close” to exit the deactivation software.

## **5. Content of the software package MIRA NEO**

The software package MIRA NEO holds three software tools:

- “MIRA-NEO Desktop” application to acquire and analyze data from the A1040 MIRA 3D instruments.
- The software tool for license deactivation
- The software tool for sending feedbacks to our support team

After installation finish in Start menu will be created shortcuts for the applications.



**Figure 20 Windows Start menu shortcuts**