

MIRA NEO
Desktop application software
for A1040 MIRA 3D ultrasonic tomograph

Installation instructions



Table of contents

- 1. Introduction3
- 2. System requirements3
- 3. Installation instructions4
- 4. Content of the software package MIRA NEO12

1. Introduction

The goal of this description is to show a setup process of a MIRA NEO desktop application. The full user manual may be found on the ACS-Solutions GmbH website <https://acs-international.com/instruments/a1040-mira-3d/> or under the link: <http://subscribe.acs-international.online/product/download/1>.

The software is protected by the electronic license key that is provided by the vendor after purchasing. For getting the formal quote, invoice, and license key, please, contact the Acoustic Control Systems – ACS Group via e-mail: sales@acs-international.com. Alternatively, you can contact one of our official sales representatives in your region that are listed on the website www.acs-international.com (chapter “Where to buy”).

2. System requirements

The minimum system requirements for the MIRA NEO desktop application are as follow:

CPU	Dual Core 2 GHz and higher
RAM	8 GB and more
Operation System	Windows10 64bit
Graphical processing unit GPU	NVIDIA GPU, minimum 2 GB RAM, OpenGL version 4.6 or higher, Maxwell or next generation architecture

3. Installation instructions

Download the software installation package MIRA NEO from the website <https://acs-international.com/instruments/software-and-applications/software/mira-neo-application-software/> (chapter “Download”).

After the download completion find the installation package in your local download folder and continue with the installation.

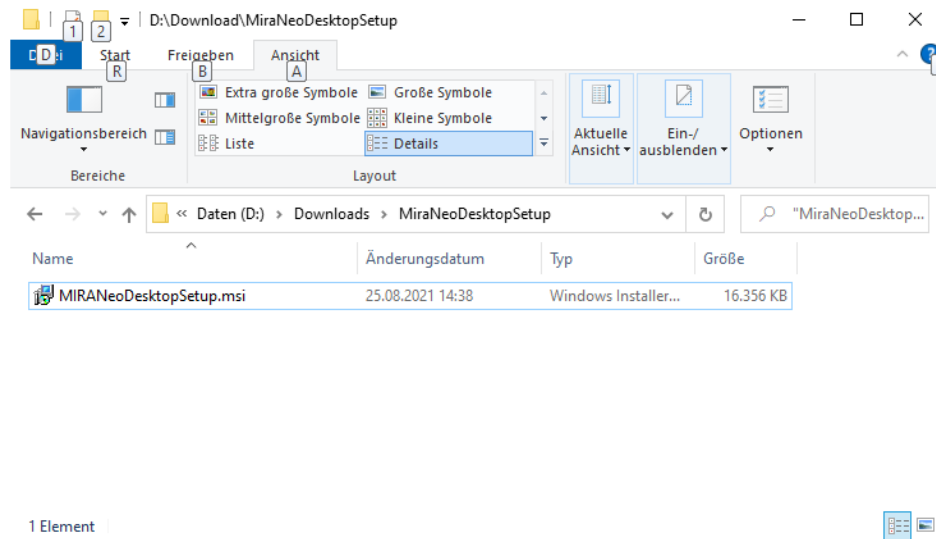


Figure 1 Setup file

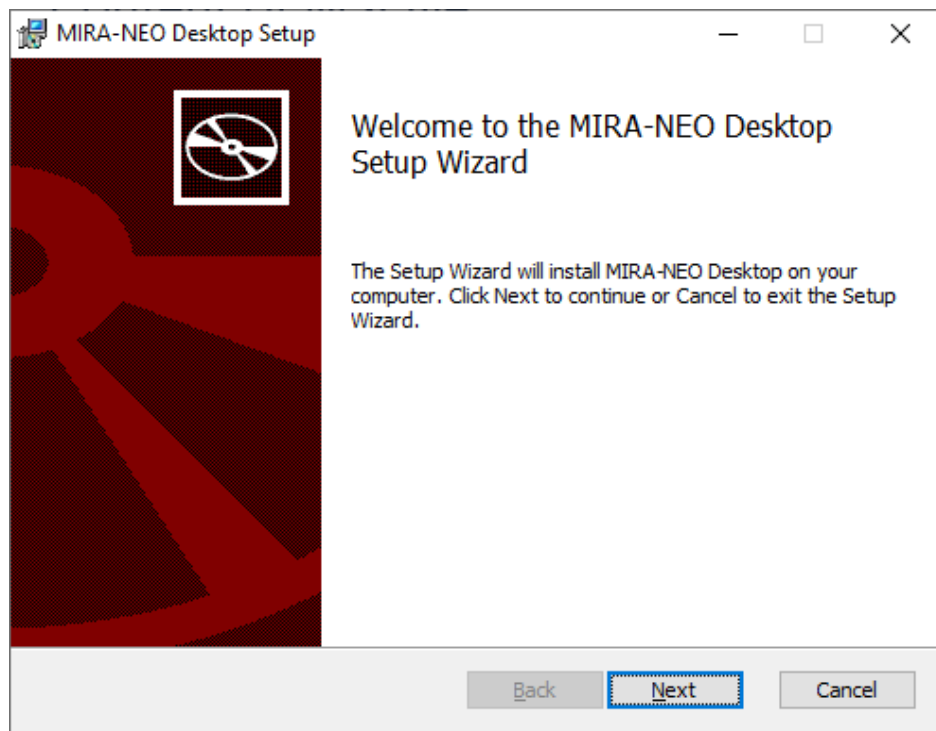


Figure 2 Welcome screen of the setup

On the beginning of setup, the license will be checked.

If the license has not been found, the user will be requested to activate his copy.

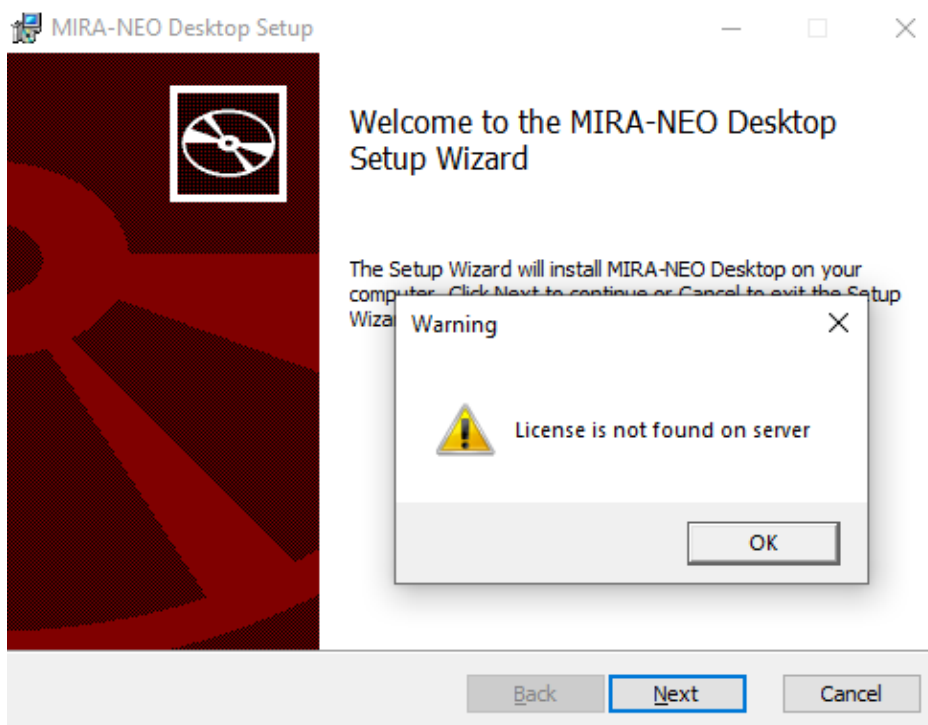
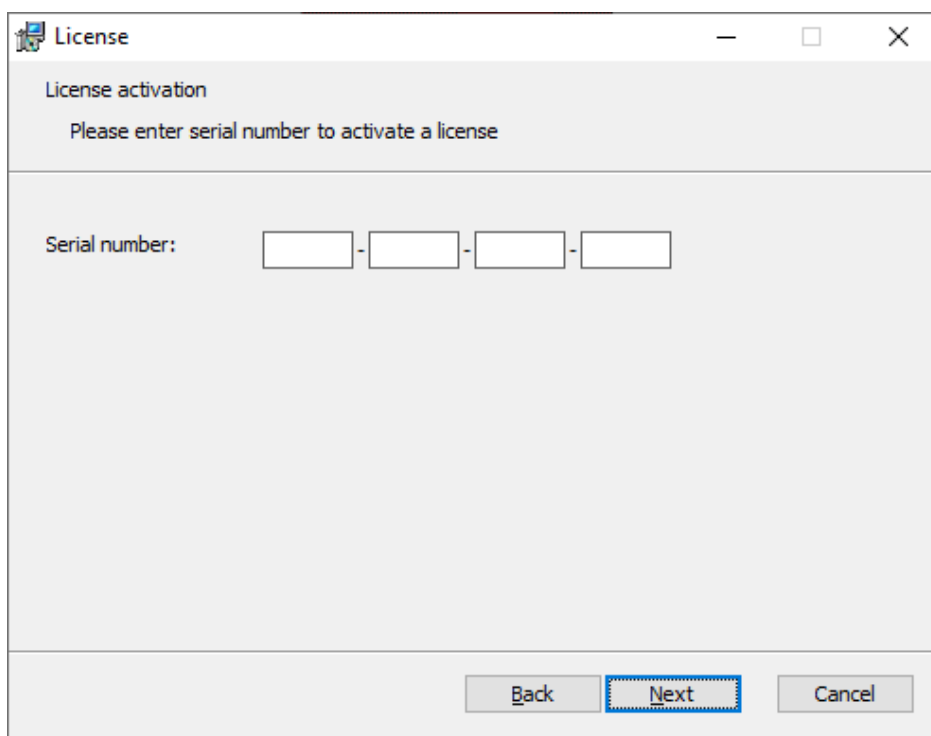


Figure 3 License check

Here the user is requested to enter the license key (16 symbols) provided by the vendor.

Please find possible error messages when entering the incorrect license key in following figures.



License

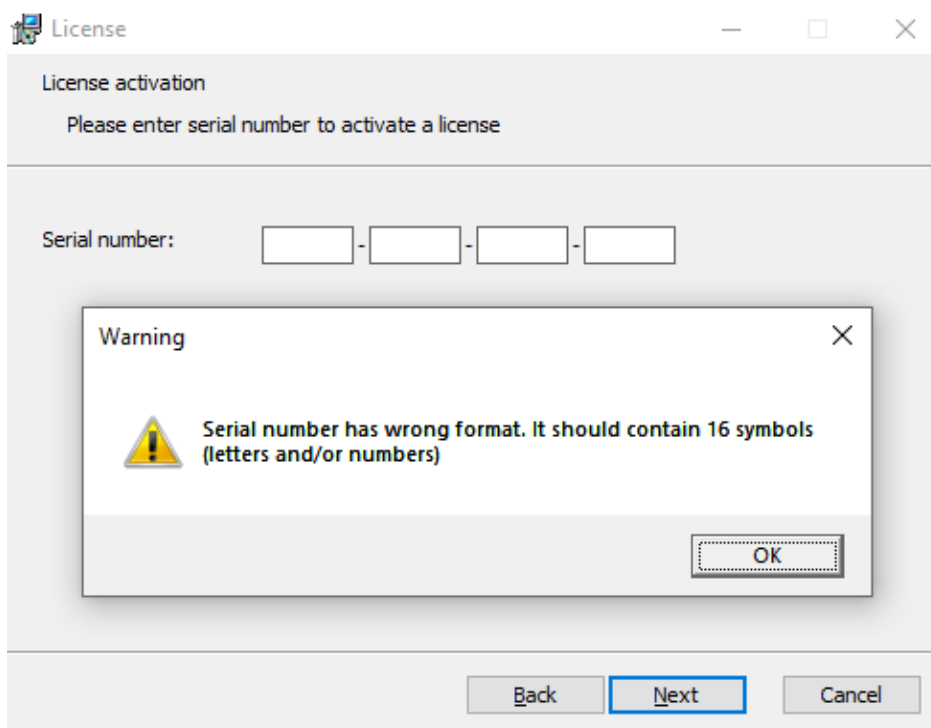
License activation

Please enter serial number to activate a license

Serial number: - - -

Back Next Cancel

Figure 4 Request to enter the serial key




License

License activation

Please enter serial number to activate a license

Serial number: - - -

Warning

 Serial number has wrong format. It should contain 16 symbols (letters and/or numbers)

OK

Back Next Cancel

Figure 5 Ill-formatted serial

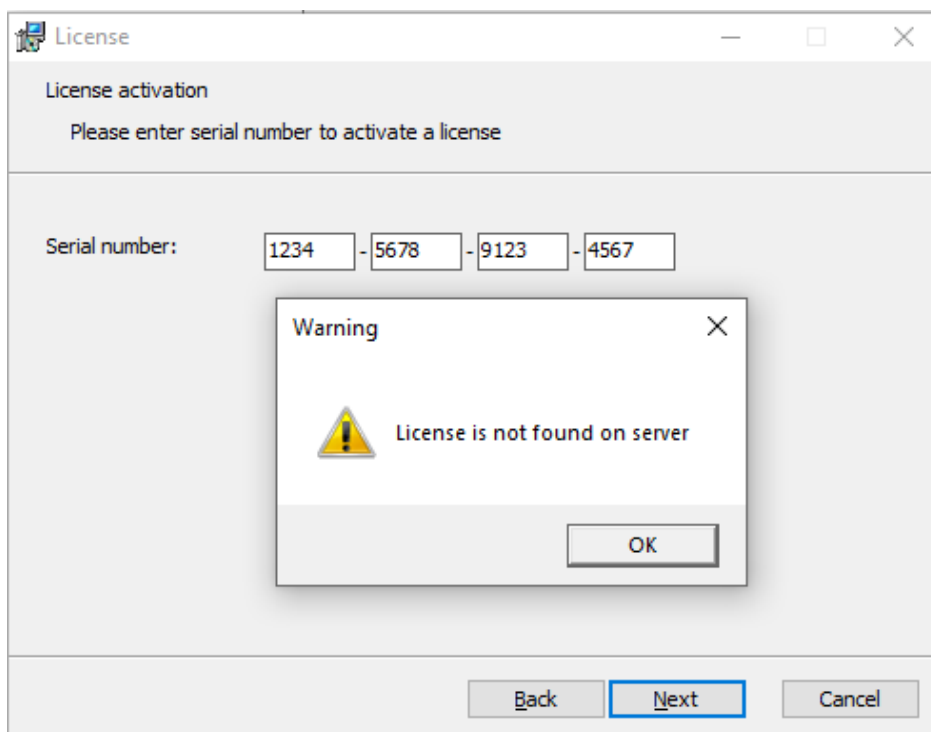


Figure 6 Wrong/non-existing serial number

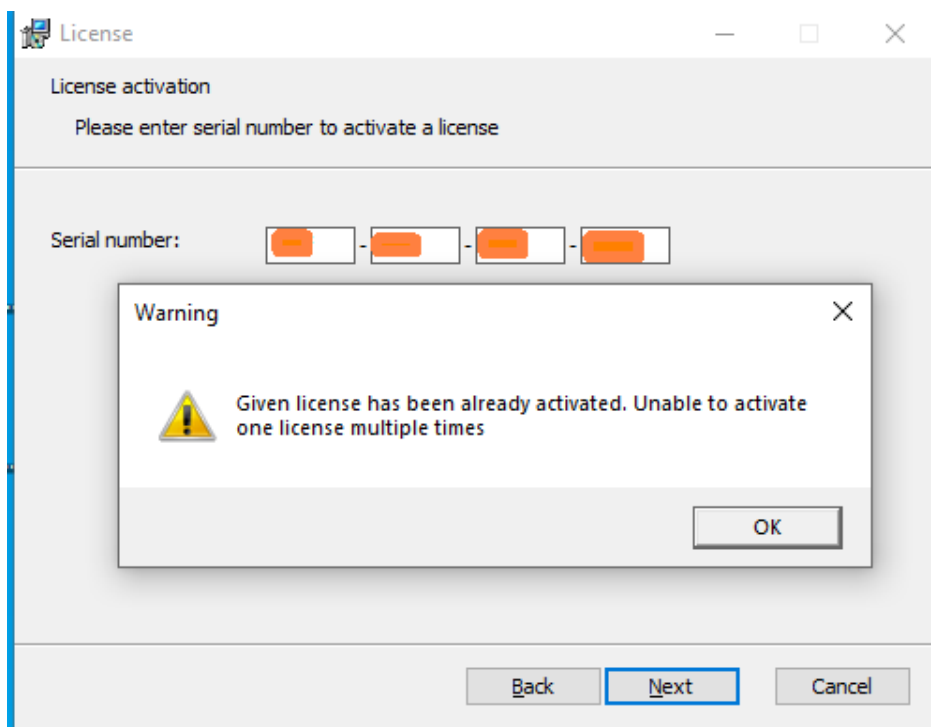


Figure 7 License has been activated already

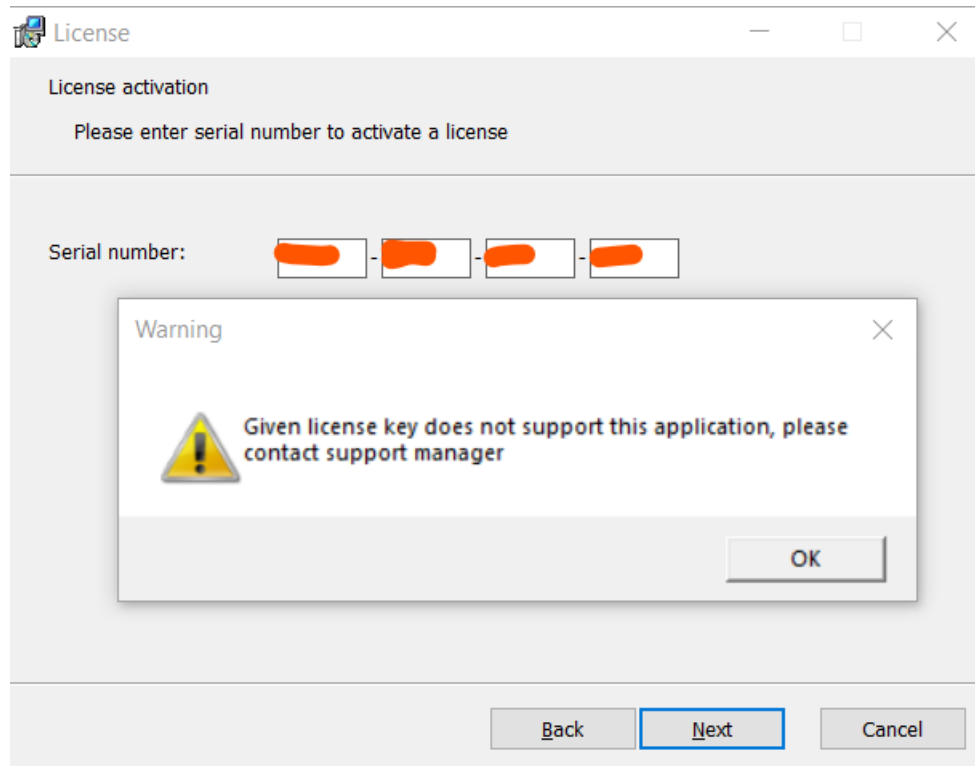


Figure 8 License does not support A1040 MIRA 3D desktop application

After entering correct serial number, the activation of the license occurs on the license server of ACS. For successful activation, the user PC must have the internet connection.

Then the user is requested to specify a folder where measurement data will be stored. By default, it is "C:\MIRANEO". By pressing "Browse" one can select the folder in a dialog window.

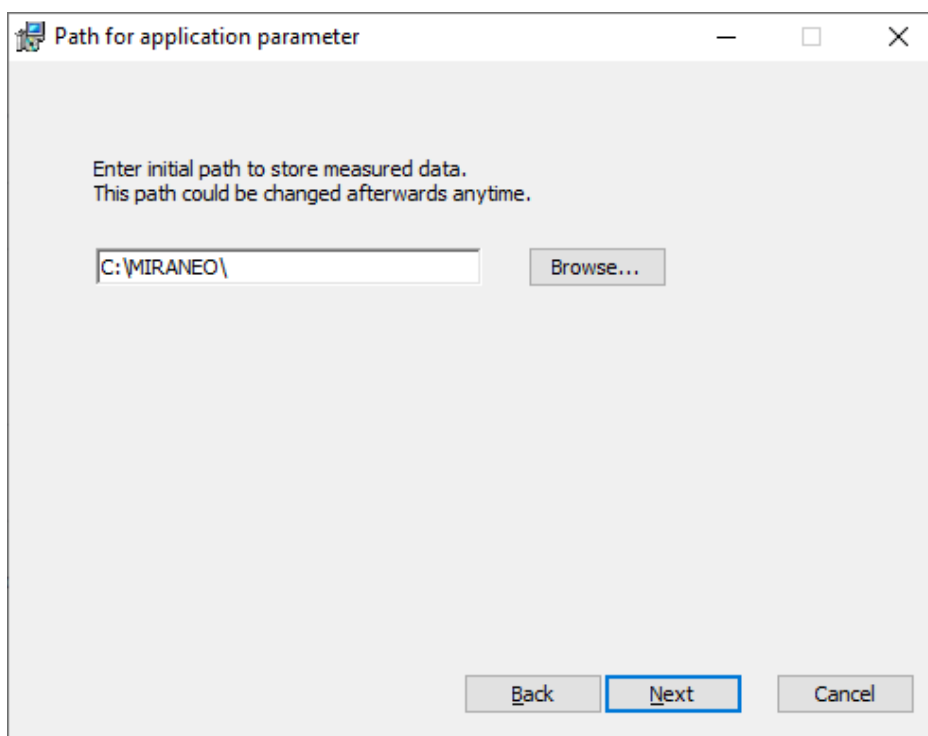


Figure 9 Path to data folder

After pressing “Next” the installer will check if the path can be used. If it is not valid or the user has not enough permissions to write to this path a warning dialog will be shown. In the window you can find the cause of the problem. Until the proper path is not specified further installation is not possible.

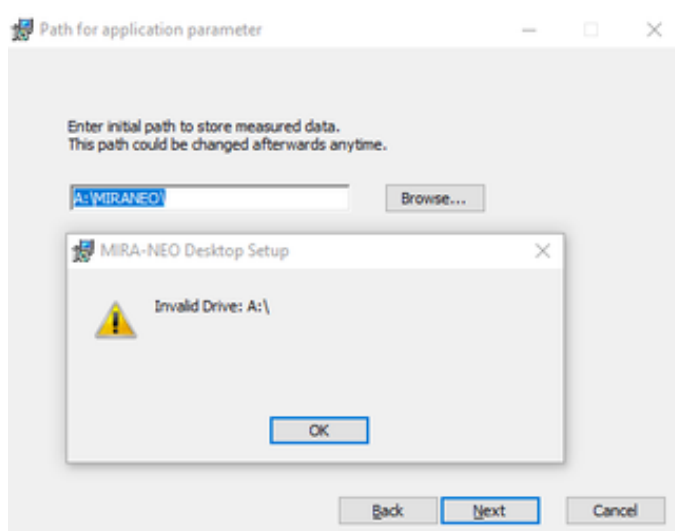


Figure 10 Path to data folder: drive does not exist or inaccessible

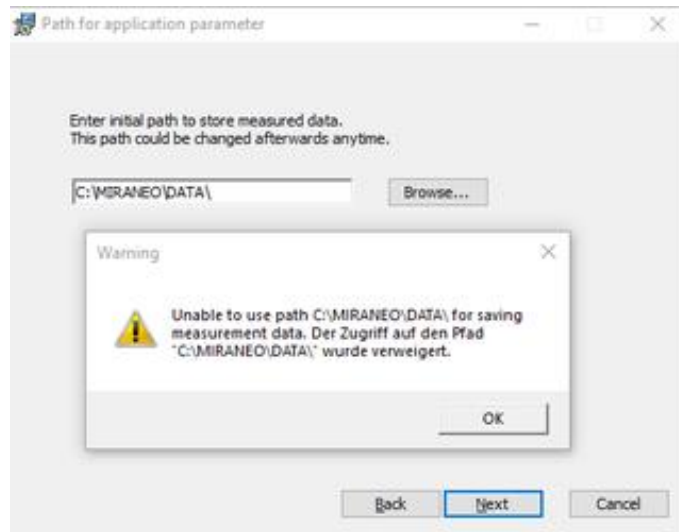


Figure 11 Path to data folder: unable to use the path, not enough rights to access

If the application has been already installed current path will be shown in the text box. On software updates it's not necessary to select the path once again.

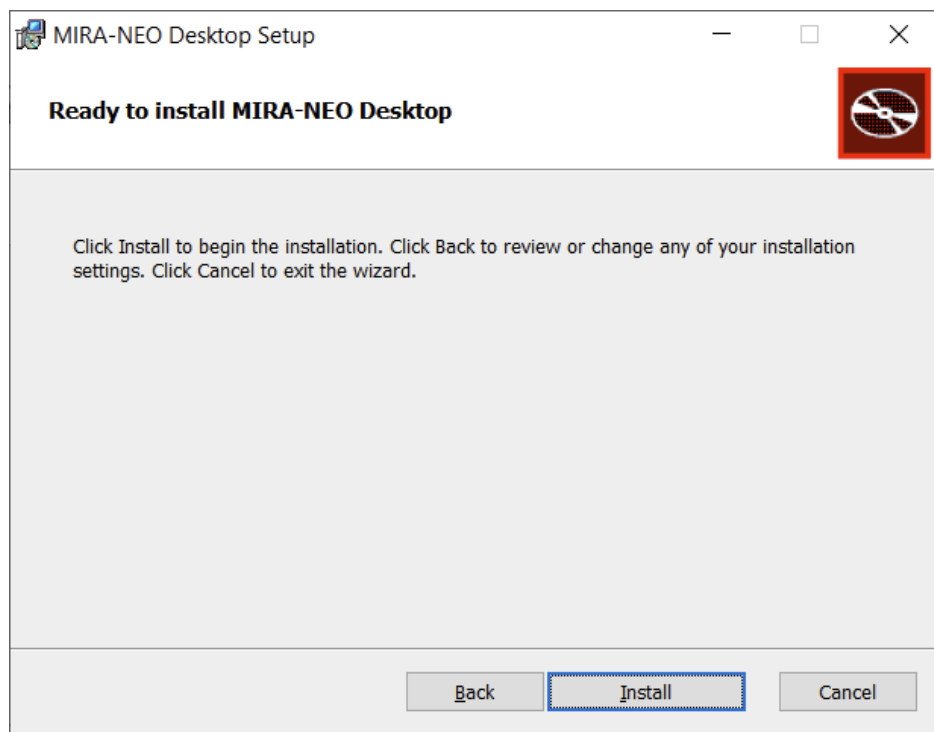


Figure 12 „Ready to install“ screen

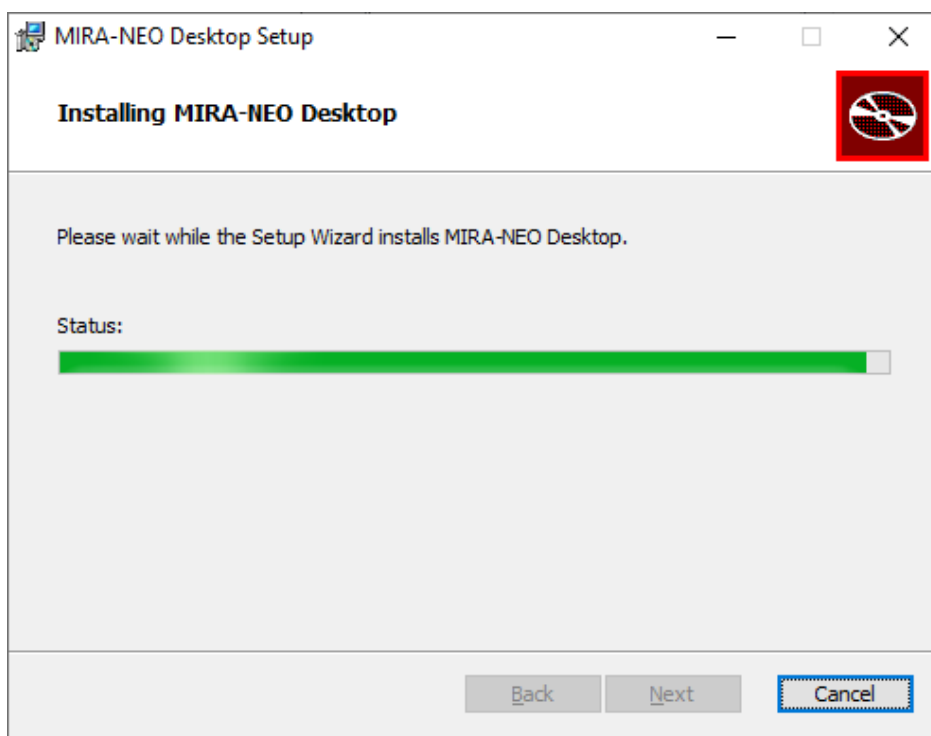


Figure 13 Installation in progress

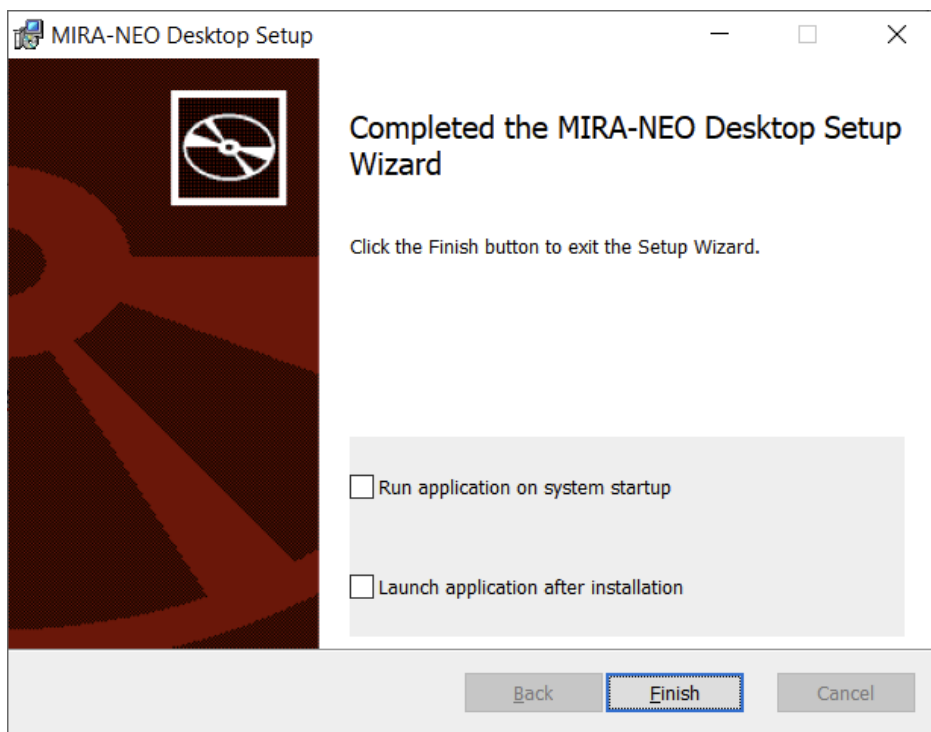


Figure 14 Installation finished

On installation finish you can optionally select to start the application on Windows startup and to launch the application directly after installation.

4. Content of the software package MIRA NEO

The software package MIRA NEO holds three software tools:

- “MIRA-NEO Desktop” application to acquire and analyze data from the A1040 MIRA 3D instruments.
- The software tool for license deactivation
- The software tool for sending feedbacks to our support team

After installation finish in Start menu will be created shortcuts for the applications.

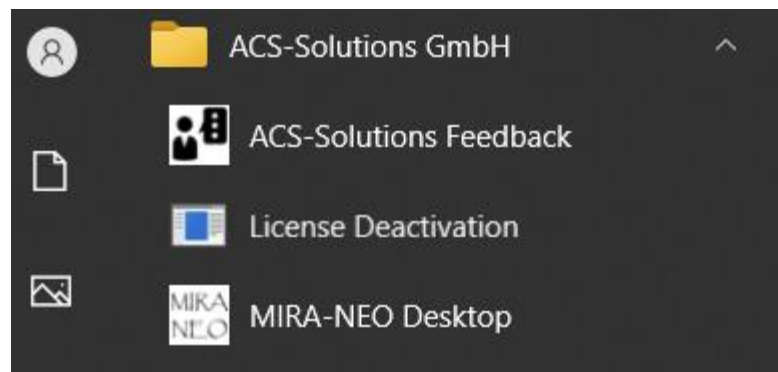


Figure 15 Windows Start menu shortcuts