

A1040 MIRA 3D Windows desktop  
application setup

The goal of this description is to show a setup process of a MIRA 3D desktop application. The full user manual may be found on the ACS-Solutions GmbH website <https://acs-international.com/instruments/a1040-mira-3d/> or under the link: <http://subscribe.acs-international.online/product/download/1>

Minimum system requirements for A1040 MIRA 3D desktop application

<b>CPU</b>	Dual Core 2 GHz and higher
<b>RAM</b>	8 GB and more
<b>Operation System</b>	Windows10 64bit
<b>Graphical processing unit GPU</b>	NVIDIA GPU, minimum 2 GB RAM, OpenGL version 4.5 or higher, Maxwell or next generation architecture

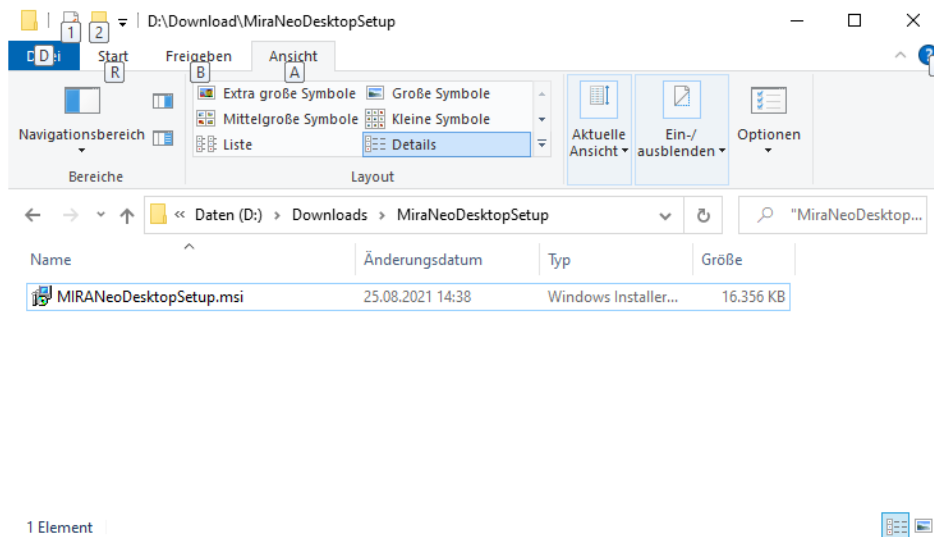


Figure 1 Setup file

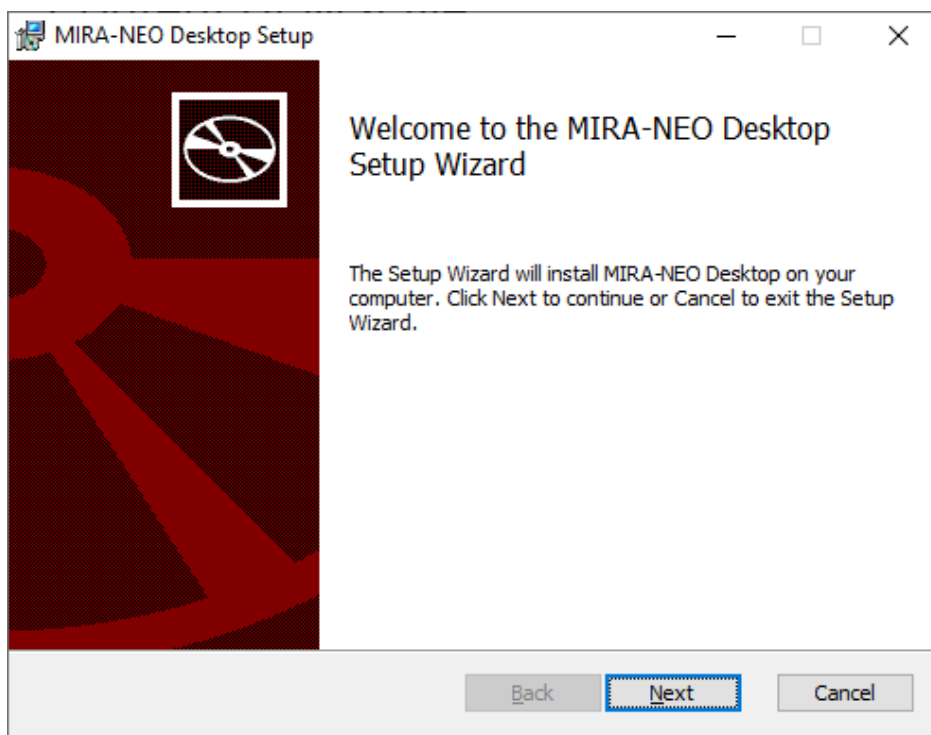


Figure 2 Welcome screen of the setup

On the beginning of setup, the license will be checked.

If a license has not been found, the user will be requested to activate his copy

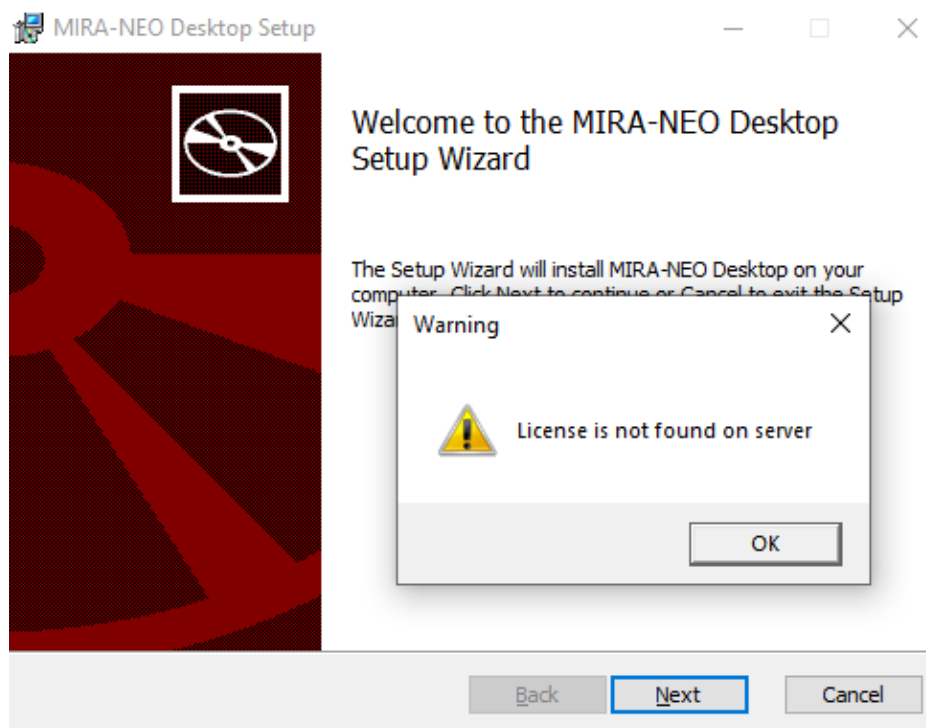


Figure 3 License check

In this case the user enters the license key (16 symbols)

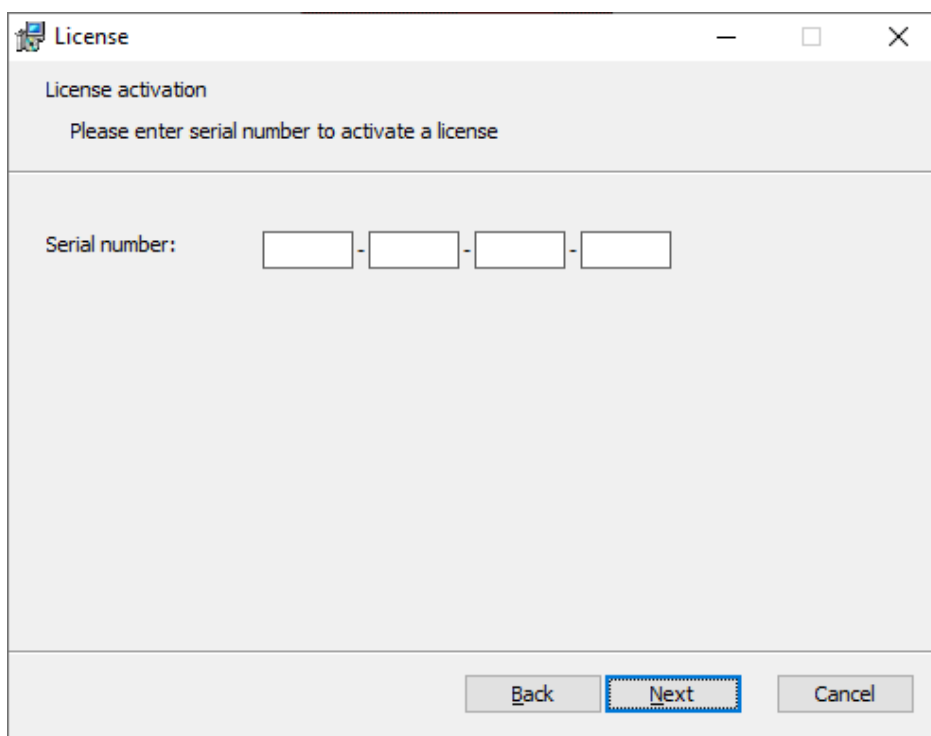


Figure 4 Request to enter the serial key

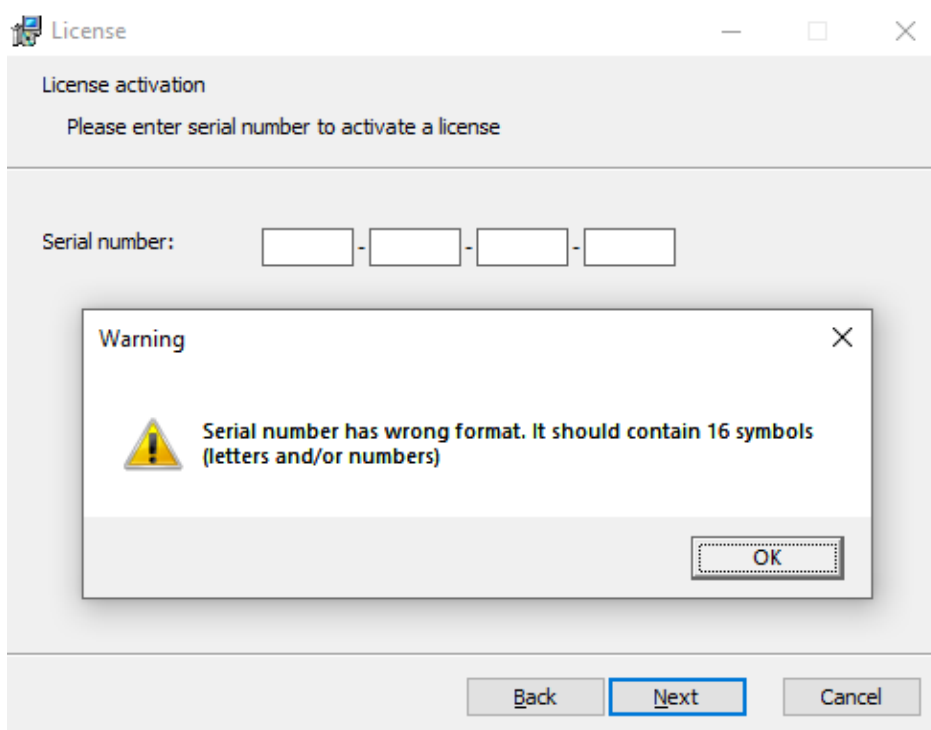


Figure 5 Ill-formatted serial

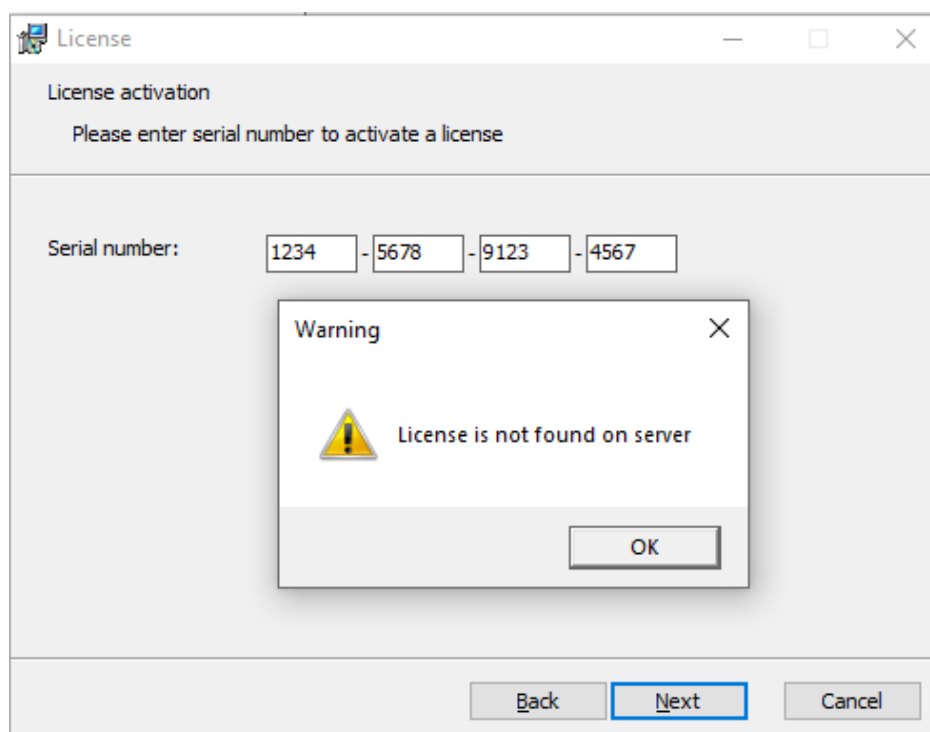


Figure 6 Wrong/non-existing serial number

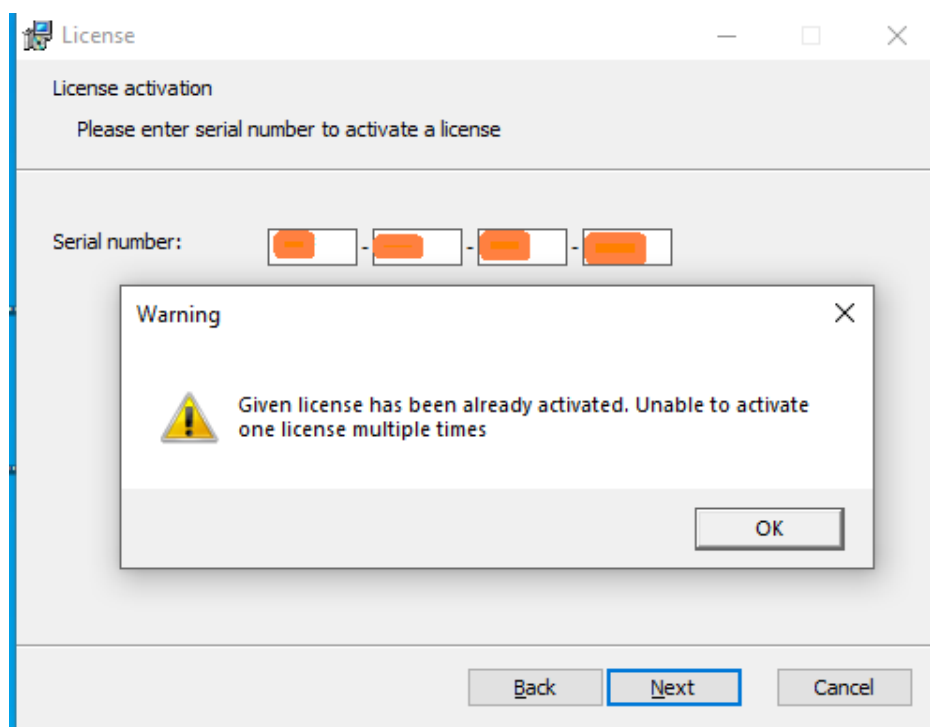


Figure 7 License has been activated already

After entering correct serial number and its successful activation on the server user is requested to specify a folder where measurement data will be stored. By

default, it is “C:\MIRANEO”. By pressing “Browse” one can select the folder in a dialog window.

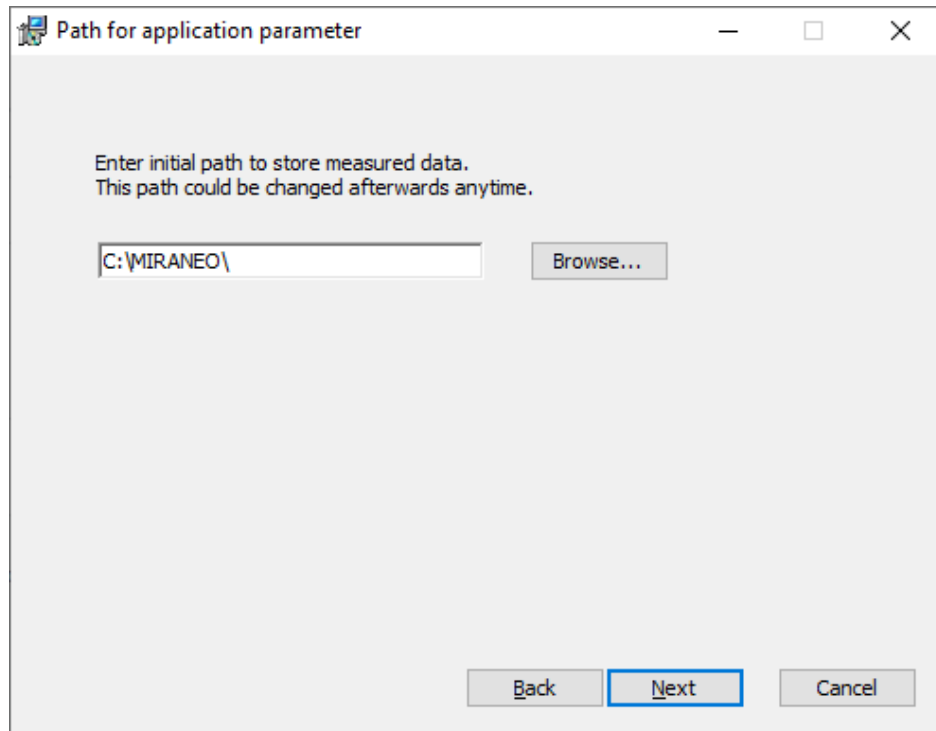


Figure 8 Path to data folder

After pressing “Next” the installer will check if the path can be used. If it is not valid or the user has not enough permissions to write to this path a warning dialog will be shown. In the window you can find the cause of the problem. Until the proper path is not specified further installation is not possible.

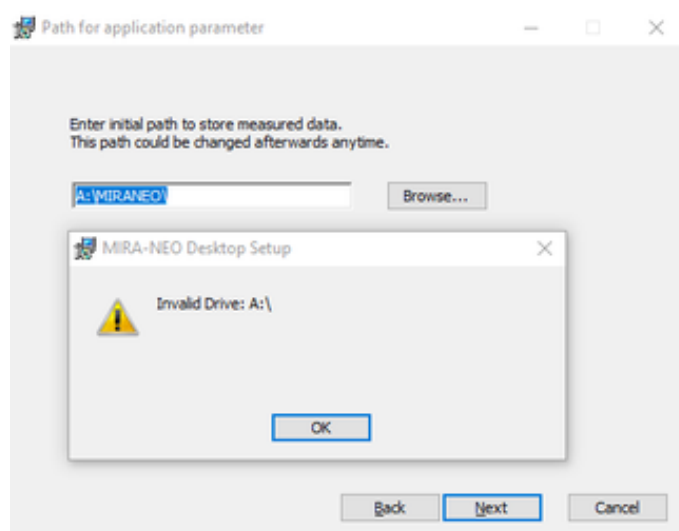


Figure 9 Path to data folder: drive does not exist or inaccessible

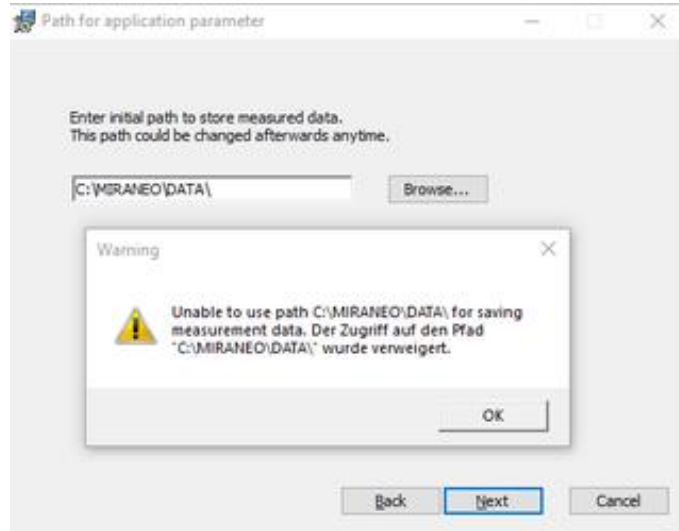


Figure 10 Path to data folder: unable to use the path, not enough rights to access

If the application has been already installed current path will be shown in the text box. On software updates it's not necessary to select the path once again.

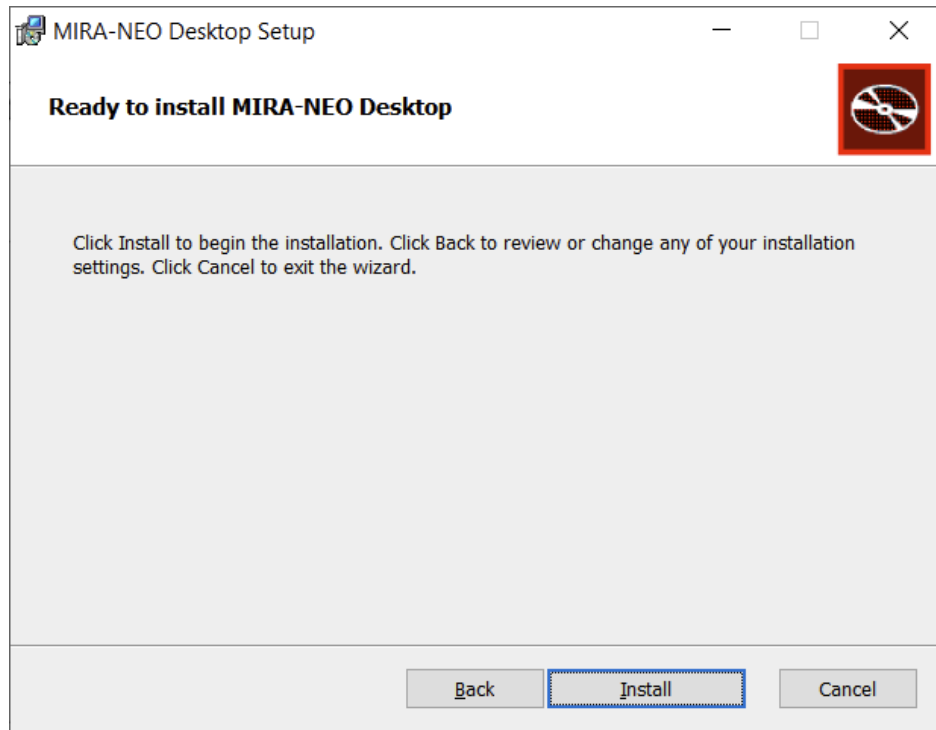


Figure 11 „Ready to install“ screen



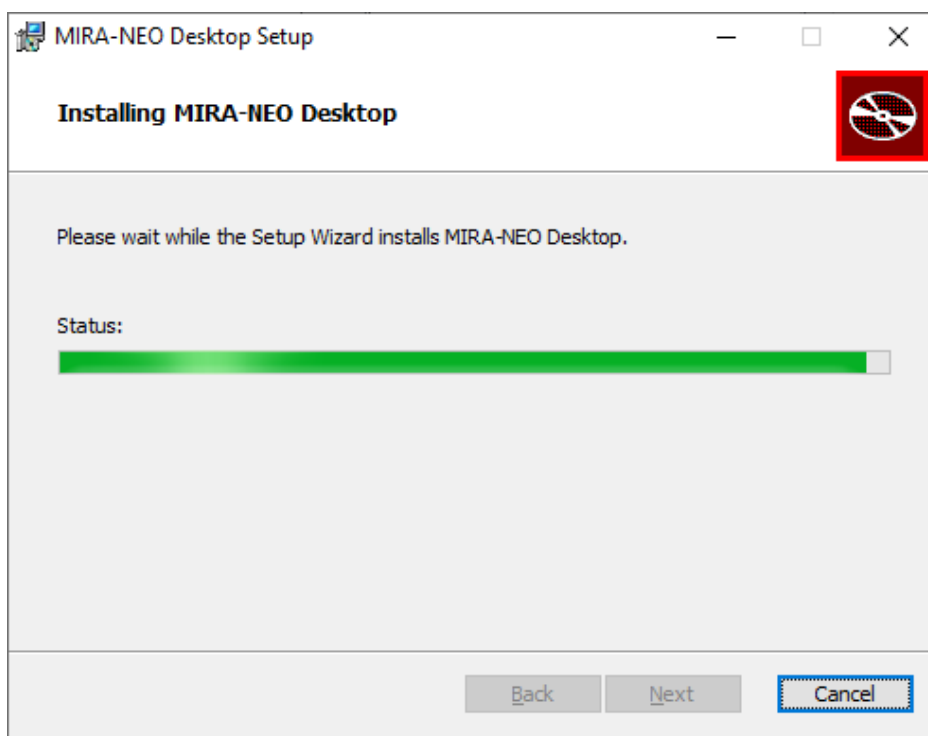


Figure 12 Installation in progress

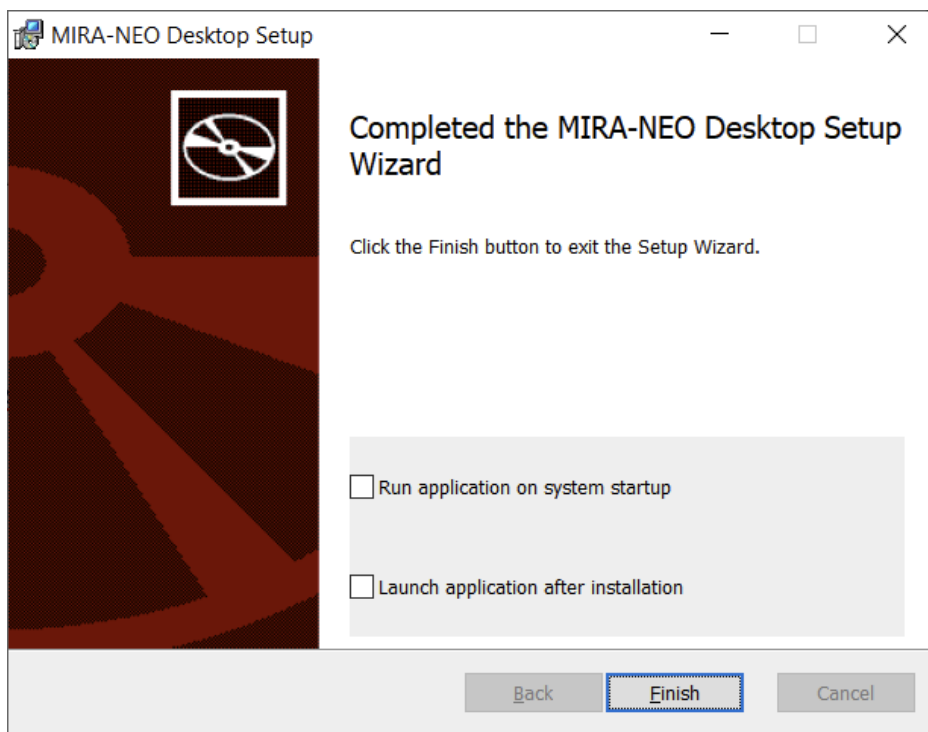


Figure 13 Installation finished

On installation finish you can optionally select to start the application on Windows startup and to launch the application directly after installation.

In the software package will be installed three products:

“MIRA-NEO Desktop” to acquire and analyze data from the MIRA 3D devices

- A software for license deactivation
- A software to send feedbacks to our support team
- After installation finish in Start menu will be created shortcuts for the applications.

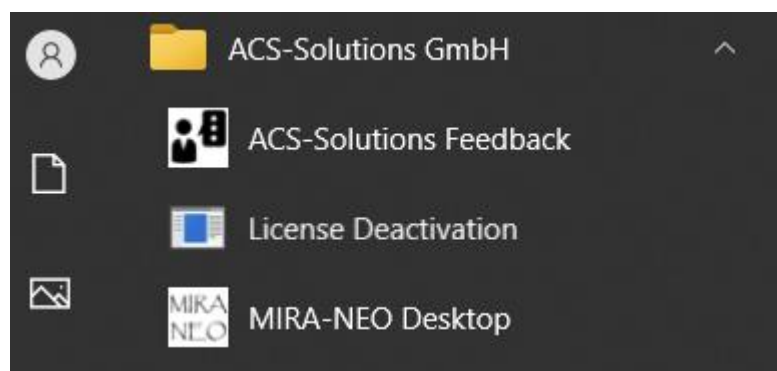


Figure 14 Windows Start menu shortcuts